

## Framing Systems

**HMP** Framing systems with channels and various accessories are used to build steel constructions for the installation of various types of secondary structures. Efficient modular support structures are built quickly and easily. Flexible and low cost application is achieved.

Framing systems consist of cold formed steel and stainless steel channels which are supplied with suitable T bolts and lock nuts to build secondary structures for various types of applications in construction. Attachments of any kind of elements are achieved with T bolts or lock nuts. Bolting is made freely at the desired position along the length of the channels.

The use of framing systems increases installation times rapidly and results in the significant decrease in application costs. Work commences very quickly and the need work drilling and welding is eliminated which results in a better quality finish at lower installation costs.

Some of the areas of use consist of pipe and duct installation, machinery set ups, mechanical and electrical installations. The use of framing systems eliminates drilling and welding on site therefore resulting in safe and quick commencement of construction works.

Channels are supplied either plain or with perforated slotted or round drilled holes. Galvanized steel and stainless steel is available.



### HMP C Channels



- Channels available with and without drilled holes
- A variety selection of channels to fit different loadings
- Toothed channels available for longitudinal loads

### HMC Cantilever brackets



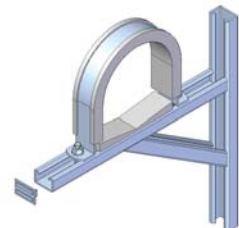
- Brackets available for projection sizes up to 700 mm
- Load capacities are verified according to different application types
- 41/41 & 36/36 C channels are used with corresponding T bolts & lock nuts

### HC Channel Connectors

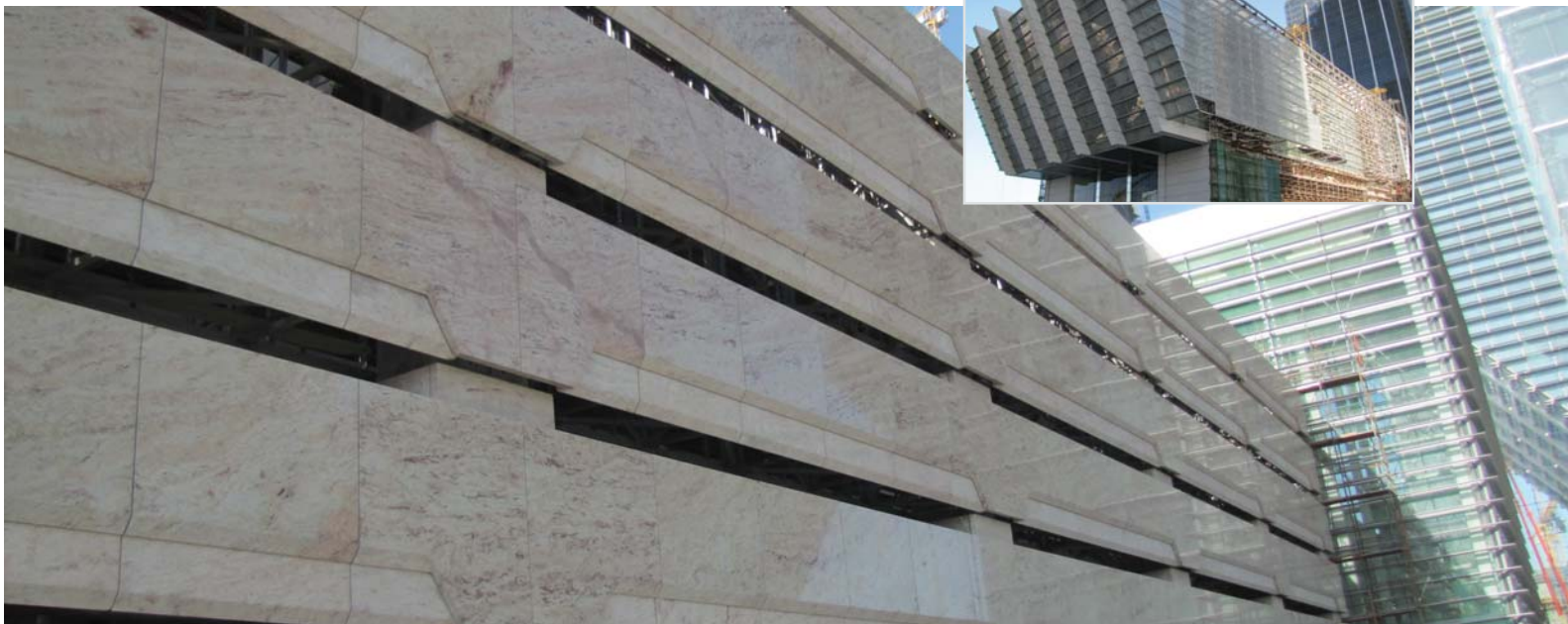


- Channel connections are available in a variety of shapes and sizes
- Suitable for use with channel types 41/41, 41/21 & 36/36

### HPCL Pipe clamps



- Pipe clamps suitable for pipe sizes between 21.5 & 508 mm
- Various type of pipe clamps available for application requirements



Abu Dhabi Financial Centre, Abu Dhabi

### Mechanical, Plumbing and Electrical Installations

Mechanical, plumbing and electrical utilities are installed using framing systems. Channel systems and its accessories provide easy and efficient solutions to meet any project's requirement. The flexibility of the framing systems offers endless formations to suit any type of application.

### Plumbing Installations

The combination of channels, brackets and channel connections allows the building of frames that are self standing. The frame work can be fixed on to the concrete ground. The modular frame works provide efficient and reliable solutions for various applications such as pipeline installation, machinery assembly and electrical fittings.

