

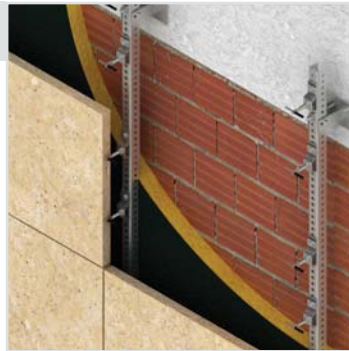
Steel Sub Channel Fixing Systems

HMP Sub channel systems are used for stone cladding on to non-load bearing walls or on to walls structures where there are high projection sizes. By using specially designed channel supports and restraints, channels are spanned between floor levels, creating a sub frame on to which installation is enabled by using set screws and nuts.

- Channels are fixed on to channel supports that are fastened to load bearing beams, spanning between floor levels overlaying in front of the thermal insulation
- Stone fixing is done with anchors that are fixed on to channels either with set screws or lock nut sets
- High load bearing capacity to fit projection sizes up to 360 mm
- Greater projection sizes are achieved with special design
- Fully adjustable and allows quick and easy installation
- Lower drilling points increases production rate and reduces cold bridging
- Channel systems available in stainless steel type 1.4301 (AISI 304) & 1.4401 (AISI 316) and hot dip galvanized mild steel type 1.0038 (S235JR)



HMPA-HC2
Sub Channel System



- Projection sizes up to 350 mm
- Ideal for heavy loads and large projections
- Installation in vertical and horizontal joints
- Adjustability in all directions, +/-30 mm
- Fixing to channels with set screw sets

HMP-ATS
Sub Channel System



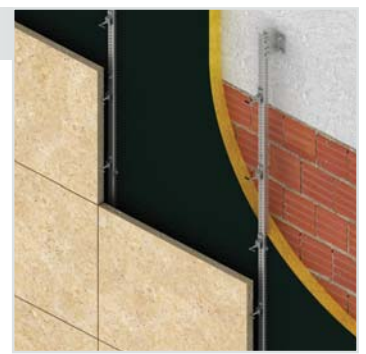
- Projection sizes up to 360 mm
- Ideal for varying projection sizes and stone panel dimensions
- Adjustability in all directions
- Fixing to channels with lock nut sets

HMPC-HC1/H
Sub Channel System

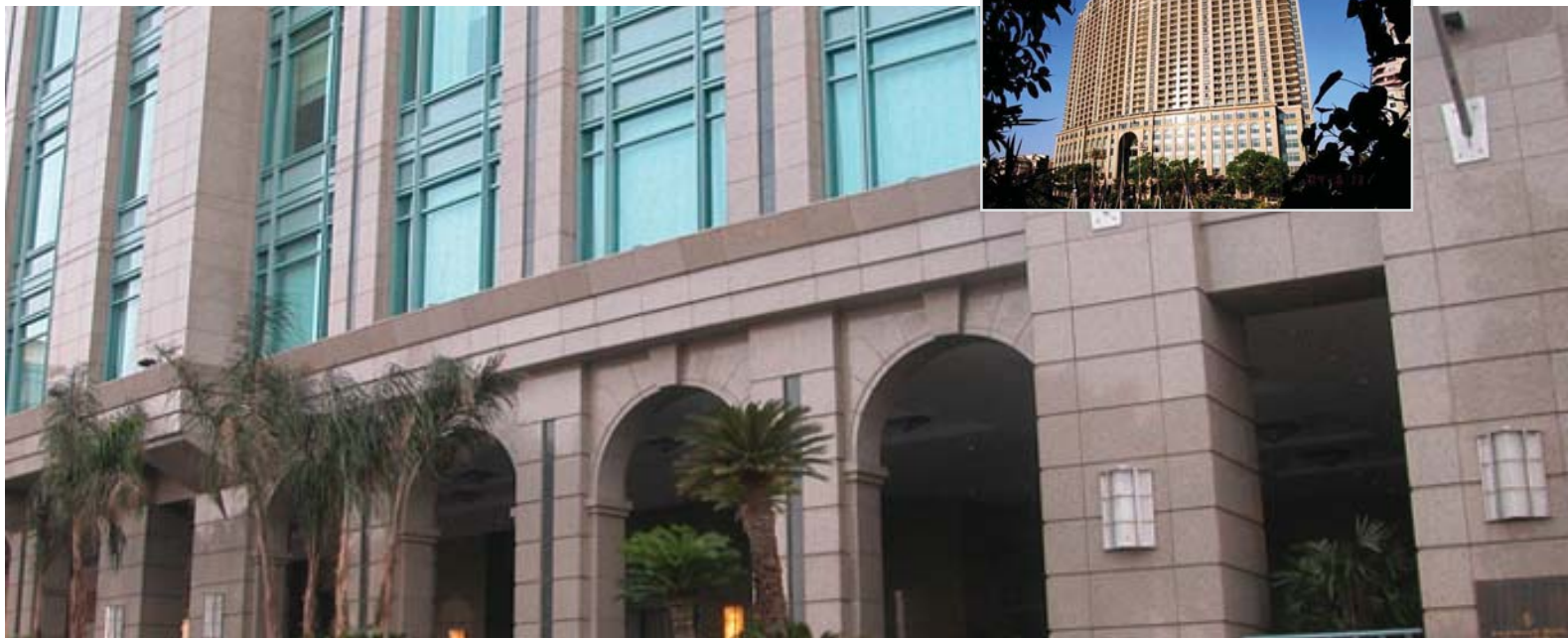


- Projection sizes up to 300 mm
- Ideal for staggered patterned façades
- Quick adjustability at horizontal axis
- Installation at horizontal joints
- Fixing to channels with lock nut sets

HMPA-HC3
Sub Channel System



- Projection sizes up to 250 mm
- Fast & easy, and economic
- Installation at horizontal and vertical joints
- Fixing to channels with set screw sets



Four Seasons Hotel, Cairo

HMPA-HC2 Sub Channel System

U Channels are fixed on to load bearing beams with channel supports, coinciding with the vertical joints of stone panels. Installation is made at the vertical joints with anchor pins setting in to the drilled pin holes on the vertical edge of the stone panels. Anchors are fixed to channels with set screw sets.

HMPC-HC1/H Sub Channel System

C Channels are fixed on to load bearing beams with channel supports. Horizontal channels are fixed on to vertical channels with connection elements, coinciding with the horizontal joints of the stone panels. Installation is made at the horizontal joints with anchor pins setting in to the drilled pin holes on the horizontal edge of the stone panels. Anchors are fixed to channels with lock nut sets.

